



Independent or simultaneous lowering of core and skin temperature has no impact on self-paced intermittent running performance in hot conditions

G. Thomas¹ · T. Cullen^{1,3} · M. Davies¹ · C. Hetheron¹ · B. Duncan¹ · N. Gerrett^{2,4} 

Received: 10 October 2018 / Accepted: 4 June 2019
© The Author(s) 2019

Abstract

Purpose To investigate the effects of lowering core (T_{gi}) and mean skin temperature (T_{sk}) concomitantly and independently on self-paced intermittent running in the heat.

Methods 10 males (30.5 ± 5.8 years, 73.2 ± 14.5 kg, 176.9 ± 8.0 cm, 56.2 ± 6.6 ml/kg/min) completed four randomised 46-min self-paced intermittent protocols on a non-motorised treadmill in 34.4 ± 1.4 °C, $36.3 \pm 4.6\%$ relative humidity. 30-min prior to exercise, participants were cooled via either ice slurry ingestion (INT); a cooling garment (EXT); mixed-cooling (ice slurry and cooling garment concurrently) (MIX); or no-cooling (CON).

Results At the end of pre-cooling and the start of exercise T_{gi} were lower during MIX (36.11 ± 1.3 °C) compared to CON (37.6 ± 0.5 °C) and EXT (36.9 ± 0.5 °C, $p < 0.05$). Throughout pre-cooling T_{sk} and thermal sensation were lower in MIX compared to CON and INT, but not EXT ($p < 0.05$). The reductions in thermophysiological responses diminished within 10–20 min of exercise. Despite lowering T_{gi} , T_{sk} , body temperature (T_b), and thermal sensation prior to exercise, the distances covered were similar (CON: 6.69 ± 1.08 km, INT: 6.96 ± 0.81 km, EXT: 6.76 ± 0.65 km, MIX 6.87 ± 0.70 km) ($p > 0.05$). Peak sprint speeds were also similar between conditions (CON: 25.6 ± 4.48 km/h, INT: 25.4 ± 3.6 km/h, EXT: 26.0 ± 4.94 km/h, MIX: 25.6 ± 3.58 km/h) ($p > 0.05$). Blood lactate, heart rate and RPE were similar between conditions ($p > 0.05$).

Conclusion Lowering T_{gi} and T_{sk} prior to self-paced intermittent exercise did not improve sprint, or submaximal running performance.

Keywords Thermoregulation · Performance · Team sports · Self-pacing · Pre-cooling · Intermittent exercise

Communicated by George Havenith.

Electronic supplementary material The online version of this article (<https://doi.org/10.1007/s00421-019-04173-y>) contains supplementary material, which is available to authorized users.

✉ N. Gerrett
nicola.gerrett@gmail.com

- ¹ School of Sport and Exercise Science, University of Worcester, Worcester, UK
- ² Faculty of Human Movement Sciences, Vrije Universiteit Amsterdam, Amsterdam, The Netherlands
- ³ Centre for Sport Exercise and Life Sciences, Coventry University, Coventry, UK
- ⁴ Laboratory for Applied Human Physiology, Graduate School of Human Development and Environment, Kobe University, Kobe, Japan

Abbreviations

ANOVA	Analysis of variance
CON	Control; Control beverage of 7.5 g/kg of water
ES	Effect size
EXT	External cooling; Wore a cooling garment whilst consuming a control beverage
HR	Heart rate
INT	Internal cooling; 7.5 g/kg of ice slurry beverage
MIX	Mix cooling; Wore a cooling garment whilst consuming ice slurry beverage
RH	Relative humidity
T_{gi}	Gastrointestinal temperature
T_b	Body temperature
T_{sk}	Skin temperature
$\dot{V}O_{2max}$	Maximum oxygen uptake

Introduction

Training and competition for many intermittent team sports take place in environmental conditions exceeding 30 °C, as seen during the 2014 Fédération Internationale de Football Association (FIFA) World Cup in Brazil (Nassis et al. 2015). During a soccer game in 43 °C and 12% relative humidity (RH), a 7% decline in total game distance covered and a 7% reduction in high-intensity running was reported compared to cooler conditions (21 °C, 55% RH) (Mohr et al. 2012). Cooling administered before intermittent exercise in the heat may have a potential benefit to mitigate the reduction in performance ($d=0.47$) (Tyler et al. 2015), but the effectiveness of pre-cooling appears to be dependent on the magnitude of thermal strain experienced and the volume of the cooling applied. Recently, we demonstrated that pre-cooling via ice slurry ingestion (7.5 g/kg) successfully lowered core temperature and thermal sensation with no change in mean skin temperature (T_{sk}), in comparison to a control beverage (Gerrett et al. 2017). However, lowering core temperature alone did not result in favourable changes to intermittent exercise performed in 30 °C, 40% RH. Studies demonstrating some evidence of enhanced intermittent exercise following pre-cooling report a decrease in both core temperature and T_{sk} (Duffield and Marino 2007; Minett et al. 2011). Thus, supporting the notion of a dose-dependent response to pre-cooling; the larger the surface exposed to cooling the greater the distance achieved during submaximal running.

Despite mixed method pre-cooling offering more cooling power compared to singular use (Bongers et al. 2015), research investigating external and internal mixed method cooling on subsequent intermittent running performance is limited and conflicting. Effective strategies and appropriate mechanisms need elucidating. A recent meta-analysis could not demonstrate a statistically significant ($p=0.28$) overall weighted effect of mixed-method pre-cooling on intermittent performance (Hohenauer et al. 2018). Aldous et al. (2018) investigated the use of mixed-method pre-cooling 30-min prior to a 45-min intermittent protocol in the heat (30.7 °C, RH 50.9%). Total distance, high-speed distance and variable run distance were significantly improved in comparison to a control condition (Aldous et al. 2018). Whereas Brade et al. (2013), in a group of acclimatised males, found repeated sprint running performance was not improved following a 30-min mixed-method pre-cooling protocol [ice slurry (7 g/kg) and cooling jacket]. This may have been attributed to only moderate reductions in core temperature (-0.4 °C) and no differences in T_{sk} compared to a control condition. Thermal sensation, an important behavioural thermoregulatory controller of exercise intensity and performance may be more favourable when both core temperature and T_{sk} are

lowered (Faulkner et al. 2015; Sawka et al. 2011; Schlader et al. 2011). However, it is important to note, Brade et al. (2013) and some of the studies included in the Hohenauer et al. (2018) meta-analysis used participants already acclimatised prior to mixed-method pre-cooling. Thus, evidence suggests mixed-method pre-cooling maybe unnecessary if seasonally acclimatized or heat-acclimated (Brade et al. 2013; Castle et al. 2011).

To date, results examining the performance effect of mixed-method pre-cooling on intermittent running exercise in the heat is equivocal. More research is warranted to gain a clear understanding of the benefit of using a mixed-method pre-cooling protocol to investigate the role of lowering core temperature and T_{sk} on intermittent exercise performance. Given that team sports are inherently self-paced, non-motorised treadmills (NMT) have allowed the development of internally paced performance tests, offering a potentially more ecologically valid assessment tool in comparison to externally paced protocols (Tofari et al. 2014). As such, we have adopted this approach to assess team-sport-specific running performance in the heat following cooling.

This study aimed to determine if a reduction in both core temperature and T_{sk} via a mixed-method pre-cooling protocol (ice slurry ingestion whilst wearing a cooling garment), improves self-paced intermittent exercise in the heat. It was hypothesised that lowering both core temperature and T_{sk} via mixed-method pre-cooling would enhance self-paced intermittent exercise compared to non-cooling, internal cooling or external cooling only.

Methods

Participants

Ten males (30.5 ± 5.8 years, 73.2 ± 14.5 kg, 176.9 ± 8.0 cm, 56.2 ± 6.6 ml/kg/min; mean \pm SD), characterised as performance level 3 athletes (Pauw et al. 2013), volunteered to participate in this study. All participants trained regularly (minimum of five times per week) and were familiar with intermittent exercise (minimum exposure of intermittent exercise including, but not limited to, the following at least once per week; intermittent sports such as football and hockey, or interval training).

Study overview

Prior to commencement of the study the University Health and Sciences Research Ethics Committee granted ethical approval (project code SH16170014-R) for all methods. All participants completed a health screen questionnaire and provided verbal and written consent to participate in the study. A repeated-measures design was used with each

participant completing all interventions in a counter balanced order. Prior to the main experimental trials participants completed a graded exercise test to determine $\dot{V}O_{2\max}$ and a separate familiarisation session of the self-paced intermittent exercise protocol. On four separate occasions participants completed an experimental trial in a temperature-controlled room (34.4 ± 1.4 °C, $36.3 \pm 4.6\%$ RH). The ambient temperature and relative humidity were similar between conditions ($p > 0.05$).

Cooling intervention

Participants completed a 30-min pre-exercise resting period in the temperature-controlled room (34.4 ± 1.4 °C, $36.3 \pm 4.6\%$ RH), where they consumed either: (1) 7.5 g/kg of ice slurry (-0.5 ± 0.4 °C) beverage (INT); (2) a control beverage of 7.5 g/kg of water (23.4 ± 0.2 °C) (CON); (3) wore a cooling garment whilst consuming a control beverage (23.4 ± 0.2 °C) (EXT); (4) wore a cooling garment whilst consuming the ice slurry beverage; (MIX). To ensure consistency across trials, the ice slurry was consumed in 3 equal aliquots of 2.5 g/kg/body mass every 10-min. All trial beverages contained a carbohydrate (CHO) solution (Robinson cordial, UK) to enhance palatability and were matched (0.75 g/kg of body mass) for fair comparison between trials. The cooling garment consisted of a cooling vest (Arctic Heat, Brisbane, QLD, Australia) covering the torso, worn over participants own T-shirt, and cooling towels (Frogg Toggs®), covering both upper and lower arms. The ice vest was stored at -80 °C and taken out of the freezer 30-min before application. The surface temperature of the ice vests when donned by the participant was approximately 0.17 °C. The cooling towels were soaked in water and rung out 10-min before application. After 30-min, participants completed a self-paced intermittent exercise test on a non-motorised treadmill.

Graded exercise test and familiarisation session

Participant's height (Seca, Birmingham, UK) and body mass (Sartorius CAH3G-150IG-H', Sartorius, Bovenden, Germany) were recorded upon arrival at the laboratory. Participants completed a 5-min self-selected warm-up prior to completing the graded exercise test for the determination of $\dot{V}O_{2\max}$ on a motorised treadmill (h/p/cosmos mercury 4.0 h/p/cosmos sports & Medical gmbh, Nussdorf-Traunstein, Germany). Starting treadmill speed was determined from the self-selected warm-up and corresponded to a heart rate value of approximately 130 b/min. The exercise intensity increased every minute by increasing speed by 1 km/h every minute until a comfortable speed was reached and thereafter gradient was increased by 0.5% until volitional fatigue (Hamlin et al. 2012). Respiratory gases were continuously

monitored throughout using an online gas analysis system (Cortex Biophysik Metalyzer, Germany) with 10-s averages being recorded. Heart rate (HR) was continuously monitored by telemetry using a HR monitor (Polar FT-1, Kempele, Finland) and rating of perceived exertion (RPE) was recorded during the last 15-s of each stage using the 6–20-point Borg Scale (Borg 1982). Blood lactate was determined from 20 μ L capillary blood samples (Biosen C-line, EKF Diagnostics) taken approximately 3-min post-test. The following criteria; a plateau in $\dot{V}O_2$, $HR \geq 85\%$ age predicted heart rate max, $RER > 1.15$, $RPE \geq 19$, voluntary exhaustion, post blood lactate ≥ 8.0 mmol/L was used to determine $\dot{V}O_{2\max}$. This was in accordance with the criteria recommended by BASES (1997). If all criteria were not met then a $\dot{V}O_{2\text{peak}}$ value was recorded as the mean value from the final 30 s.

With at least 24-h separating the $\dot{V}O_{2\max}$ test, to ensure adequate test–retest reliability (Tofari et al. 2014), participants returned to the laboratory (~ 19 °C, 45% RH) to familiarise themselves with the intermittent protocol on the non-motorised Treadmill (Woodway Curve 3.0TM; Woodway, Inc., Waukesha, Wisconsin, USA).

A 46-min modified protocol derived from the 30-min self-paced intermittent protocol, validated by Tofari et al. 2014 was employed, which has a coefficient of variation (with 90% confidence intervals) from a test–retest ($n=3$) of 2.9% (3.8–4.1) for total distance covered (km), 4.6% (3.3–8.1) for peak speed (km/h) and 3.8% (0.96–1.1) for sprint distance (km).

Exercise protocol

The protocol included a 2-min warm-up at a self-selected speed followed by a 46-min intermittent protocol to replicate the first half of a football game. This was based on a previously published protocol (Gerrett et al. 2017). The protocol consisted of three 15.5-min periods separated by a 71 s recovery period and included the following; 10×10 s sprints, 3×51 s run, 6×50 s jog, 6×30 s walk, and 2×30 s rest period. The high-intensity bouts (run and sprint) were always followed by a low-intensity bout (rest, walk or jog). Participants were informed that the performance indicators were the total distance covered and their average speed during each bout and their maximal speeds during 'sprint' and 'run' commands. Participants were instructed that 'sprints' should be completed at 100% effort, 'runs' at 75% effort, 'jogs' at 45% effort and 'walks' at 10% effort. A screen was placed at eye level and displayed the exercise instruction (e.g., WALK, JOG, RUN, and SPRINT), the total exercise time and a time indicator of when the next exercise instruction would appear. Information regarding speed and distance covered were concealed from view.

Experimental protocol

Participants were instructed to swallow a telemetric pill (Cortemp; HQ Inc., Palmetto, FL, USA) 7–8 h prior to each test session. On arrival at the laboratory a urine sample was collected prior to measurement of semi-nude body weight. Eight wireless T_{sk} sensors were attached and a HR monitor worn, after which, a resting fingertip blood lactate sample was taken along with a whole-body thermal sensation (modified ASHRAE scale 2005). Participants then sat for 30-min in temperature-controlled room (34.4 ± 1.4 °C, $36.3 \pm 4.6\%$ RH) and completed INT, CON, EXT or MIX, as described above. At 5-min intervals during the pre-exercise period T_{gi} , HR, and thermal sensation were recorded.

Within 5-min of consuming the final beverage and/or removing cooling garments, participants began the intermittent exercise protocol (as outlined above) in the same temperature-controlled room with a fan set at 1.3 m/s placed 75 cm in front of the participant directed towards the torso. At 5-min intervals T_{gi} , HR, RPE, and thermal sensation were recorded. During the two 71 s recovery period (mid 1 and mid 2) and at the end of the test (post) a blood lactate sample was taken from the fingertip. At the end of the exercise protocol, participants towel-dried themselves and were weighed semi-nude, prior to the collection of a post urine sample. All trials were completed at the same time of day (± 1 h), with at least 5 days separating trials. Participants were asked to replicate their diet prior to each visit and refrain from caffeine 12-hr and alcohol 24-hr preceding the trials.

Measurements

Exercise performance data

Running speed and distance covered were recorded continuously (sampling at 100 Hz) during the 46-min intermittent protocol on a non-motorised treadmill. The average speed and total distance covered during each exercise profile (WALK, JOG, RUN, and SPRINT) were calculated. The peak speed achieved during the high-intensity activity profiles (RUN and SPRINT) were identified. The mean velocity in each stage (WALK, JOG, RUN, and SPRINT) was expressed as a percentage of the individuals peak velocity achieved during that trial. The aforementioned data were separated into the first, second, and third (15.5-min) periods. The total distance covered for the entire protocol was also calculated for each condition.

Core, skin, and body temperature

The telemetric pill was used to measure gastrointestinal temperature (T_{gi}), which was used as an indicator of core

temperature. This was measured every 5 min during the pre-exercise and exercise period. A safety stop criteria was set at 39.5 °C but this was not exceeded by any participants in any conditions. Based on the recommendations by Hunt et al. (2017) all telemetric pills were checked against a reference mercury thermometer in a water bath and where appropriate corrections were applied to reduce any systematic bias. T_{sk} was measured at eight sites (forehead, chest, upper back, upper arm, forearm, hand, thigh, and calf) using iButtons® (Maxim Integrated Products, Inc., Sunnyvale, California, USA). Occasionally some data (1 or 2 locations) were missing due to equipment errors so an unweighted mean T_{sk} was calculated. T_{sk} was continuously recorded at a sample rate of 1 per second with data averaged over a 5-min period. Mean body temperature (T_b) was calculated as $0.79 \times T_{gi} + 0.21 \times \text{mean } T_{sk}$ (Colin et al. 1971).

Thermal sensation, RPE, heart rate, and blood lactate

HR was recorded using a wireless HR monitor (Polar FT-1), sampling every second and averaged every 5-min during rest and exercise. Thermal sensation was rated using a scale ranging from + 10 (extremely hot) to – 10 (extremely cold) with 0 indicating thermal neutrality (Ashrae 2005) and was recorded at 5-min intervals during rest and exercise. Participants were instructed to report the number (corresponding to the thermal sensation description) that best represented their whole-body thermal status at that moment in time and were not permitted to recall their previous sensation. RPE was recorded using the 6–20-point Borg Scale (Borg 1982) at 5-min intervals during exercise only. Participants were instructed to report the number (corresponding to the exertion description) that best represented how hard they felt they worked for the preceding 5-min period. TS and RPE were collected by the same researcher and accompanied by standardised instructions and the memory-anchoring procedure (Haile et al. 2014). Capillary blood samples (20 μ L) were taken from the fingertip and analysed for blood-lactate concentration.

Urine osmolality and gross sweat loss

Urine samples were assessed for urine osmolality using a portable osmometer (Vitech Scientific, West Sussex). Changes in semi-nude body mass were used to estimate gross sweat loss (g) adjusted for fluid intake.

Statistical analysis

Before fitting statistical models, a data exploration was undertaken following a protocol to visualise and examine the data for outliers in both response and explanatory variables,

homogeneity in the response variables, collinearity between explanatory variables, and the nature of the relationships between response variables and explanatory variables (see Zuur et al. 2009). No influential outliers were found and the data met the assumptions required for the chosen statistical models. Data exploration was performed using R statistical software (R Core Team 2017). Performance variables (distance covered, average speed and maximum speed, and percentage of peak speed) were investigated using linear mixed effects models. Condition (INT, CON, EXT or MIX), activity (WALK, JOG, RUN, SPRINT) and period (first, second, third) were treated as fixed effects. The model included an interaction term that allowed the quantification of the interaction between conditions, activities and periods, and a random term was used to estimate variation between participants whilst also controlling for the treatment and activity effects.

Changes in the physiological responses were used for the main part of the analysis and the average absolute data are presented in supplementary files. Generalised Additive Mixed Models (GAMMs) were fitted to the data for the various physiological responses to treatment and activity due to non-linear patterns in the temperature change-response variable identified at the data exploration stage. GAMMs incorporate non-parametric smooth terms with mixed effects (Wood 2017). Condition and time were treated as fixed effects, including a time \times condition interaction term. A random term was used to estimate variation between participants whilst also controlling for the treatment and activity effects. The model was fitted to the data to test the effects of different pre-cooling treatments on changes in the physiological responses of the participants. Smooths were fitted as interaction terms with different treatments to investigate if patterns in physiological responses were significantly different between treatments. 95% CIs were used as a way of confirming significance during the trials whereby if the intervals do not overlap at all then a real effect has occurred (O'Brien and Yi 2016). All models were fitted using the `gamm4` package (Wood and Scheipl 2017) in R. The assumptions for all models were checked by extracting residuals and plotting these with fitted values to check for non-linear patterns and homogeneity of variance. Residuals were also plotted against covariates used within the model as a further check for homogeneity and any potential patterns. Residual patterns were absent and homogeneity of variance satisfied.

Comparison between pre-cooling protocols was standardised using Cohens *d* effect sizes (ES) with the following descriptive criteria; an ES of < 0.2 is classified as 'trivial', $0.2\text{--}0.4$ as 'small', $0.5\text{--}0.7$ as 'moderate' and > 0.8 as a 'large' effect.

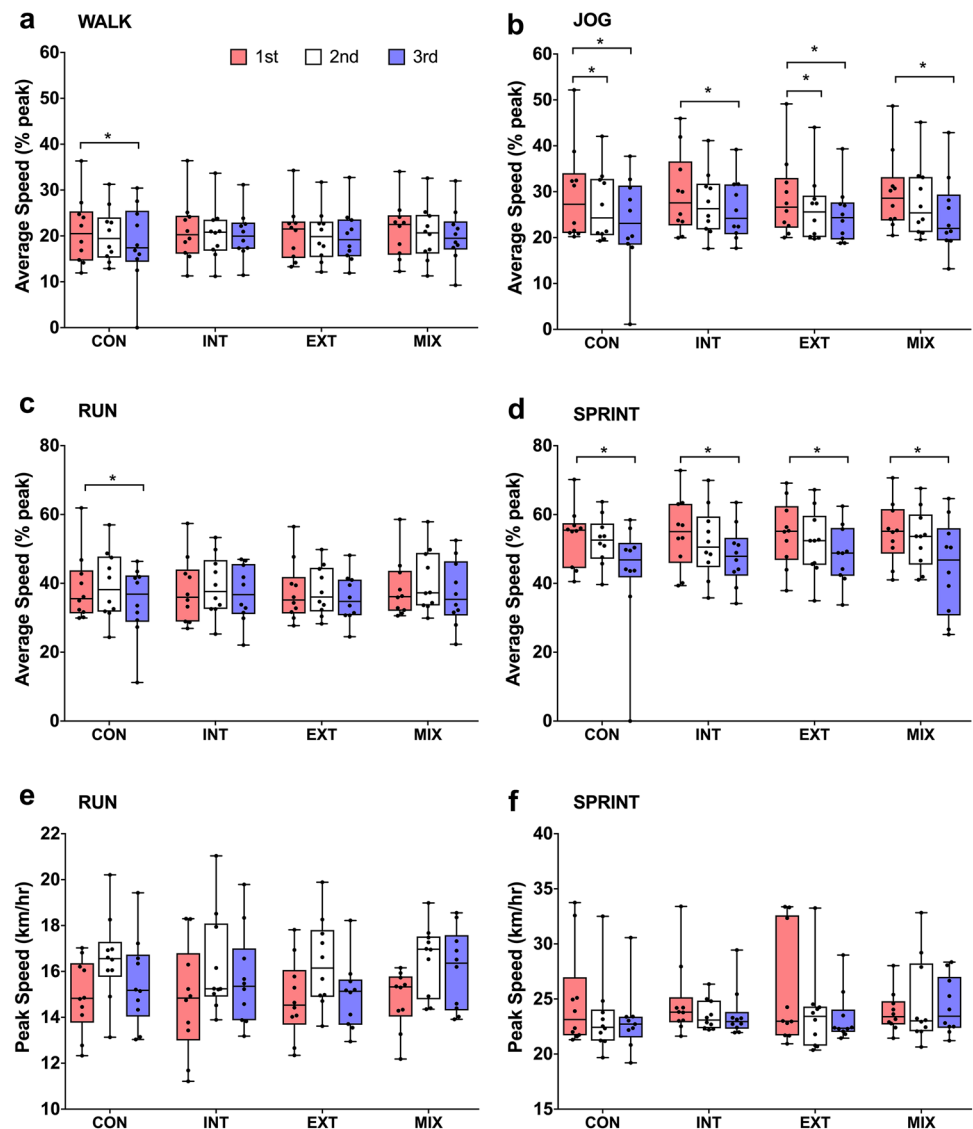
Results

The mixed model showed that there was no effect of condition on average speed (Fig. 1a–d) nor peak speed (Fig. 1e, f) ($p > 0.05$). Trivial to small effect sizes were observed between conditions (ES = 0.01–0.23). Total distances covered (Fig. 2) were similar between conditions (CON: 6.69 ± 1.08 km, INT: 6.96 ± 0.81 km, EXT: 6.76 ± 0.65 km, MIX 6.87 ± 0.70 km) ($p > 0.05$) and only small effect sizes observed between CON vs. INT (ES = 0.28) CON vs. MIX (ES = 0.20) and INT vs. EXT (ES = 0.26). There were no significant differences in the distance covered between conditions for each activity profile (Fig. 3a–d, $p > 0.05$) with trivial-to-small effects observed (ES = 0.1–0.42).

There was a significant decline in all performance variables (peak speeds, percentage of peak speeds, and distance covered) from period 1 to period 3 ($p < 0.05$); however, there was no interaction with condition or activity. The significant decline from the first period to the third period in peak speed achieved during the RUN and SPRINT ($p < 0.05$) had only small to moderate effect sizes (ES = 0.20–0.59). For the percentage of peak speed (Fig. 1a–d) for all conditions, effect sizes between the first and third period for the WALK and RUN were small to trivial (ES = 0.13–0.45 and 0.10–0.40, respectively) and small-to-moderate for JOG (ES = 0.43–0.60). Whilst moderate-to-large effect sizes were observed for SPRINT activity profile between the third period compared to the first (ES = 0.67–0.87). The decline in distances covered between the first and third period was small for the WALK (ES = 0.3) and RUN (ES = 0.29), moderate for JOG (ES = 0.79) and large for SPRINT (ES = 1.11).

The models for change in physiological responses (T_{gi} , T_b , and mean T_{sk}) showed significant effects of time (Fig. 4) ($p < 0.001$). On inspection of the 95% confidence intervals, compared to CON, changes in T_{gi} for MIX and INT was significantly different at the end of pre-cooling and at start of exercise. EXT and MIX was also significantly different from one another at the end of pre-cooling and at start of exercise (-5 to 5) as evidenced by a lack of CI overlap (Fig. 4a). Similar changes in T_{gi} across all conditions were evident after 10 min. There were moderate to large effect sizes (ES > 0.5) for differences between CON vs. INT (from -10 to $+10$ min), CON vs MIX (from -10 to 15 min), EXT vs, MIX (from -15 to 15 min) and INT vs EXT from -20 to 10 min into exercise (ES = 0.5–0.77). Small to trivial effects were observed throughout the protocol for INT vs. MIX (ES < 0.30) and CON vs. EXT (ES < 0.36) except the final 5 min of exercise (ES > 0.57). A greater rise in T_{gi} and the rate of rise ($^{\circ}\text{C}/\text{min}$) were observed for INT (ΔT_{gi} : 2.7 ± 1.1 $^{\circ}\text{C}$ and 0.057 ± 0.04 $^{\circ}\text{C}/\text{min}$) and MIX (ΔT_{gi} : 3.0 ± 1.1 $^{\circ}\text{C}$ and 0.062 ± 0.02 $^{\circ}\text{C}/\text{min}$) compared to EXT (ΔT_{gi} : 2.0 ± 0.5 $^{\circ}\text{C}$ and 0.041 ± 0.008 $^{\circ}\text{C}/\text{min}$) and CON

Fig. 1 Box plots comparing the percentage of peak speed (**a–d**) for the WALK, JOG, RUN, and SPRINT during the first period, second period and third period in the four conditions (*CON* control, *INT* internal cooling, *EXT* external cooling, *MIX* internal, and external cooling). Peak speeds during the RUN and SPRINT are also shown (**e, f**). Boxes indicate the 25th and 75th percentiles. Whiskers indicate minimum and maximum values with the middle line representing the median. Individual data points are indicated by black dots. For peak speeds there were no significant effects of condition, time or an interaction effect ($p > 0.05$). There was no interaction effect ($p < 0.05$). The percentage of peak speed declined for some conditions from the first to second period ($\#p < 0.05$) and first to third period ($*p < 0.05$)



(ΔT_{gi} : 1.8 ± 0.4 °C and 0.042 ± 0.01 °C/min) ($p < 0.05$) as T_{gi} were significantly lower at the start of the exercise protocol but T_{gi} were similar between conditions at the end of exercise.

Differences in T_b change (Fig. 4b) were evident between CON and MIX, especially between –20- and 5-min. T_b for all other conditions were similar between pre-cooling and exercise. Moderate-to-large effect sizes ($ES > 0.5$) were observed between CON vs. INT (0–10 min), CON vs. EXT (–30 to 10 min), CON vs. MIX (–20 to 15 min), INT vs. EXT (–30 to –15 and from 35–45 min), INT vs. MIX (–30 to 5 min), and EXT vs. MIX (from –10 to 10 min and from 40 to 45 min).

Mean T_{sk} increased for all conditions and were higher than baseline throughout the entire protocol ($p < 0.05$). In comparison to baseline, large effects were observed from –5 to 0 and then from –15 until the end of the experiment

($ES > 0.54$). Differences in mean T_{sk} change were evident between CON and EXT and CON and MIX and found between 20 and 25 min and between 25 and 30 min, respectively ($p < 0.05$). Whereas CON and INT followed a similar pattern of increase. Differences in mean T_{sk} change were also evident between INT and EXT, and INT and MIX, these differences were found between 15 and 40 min, and between 20 and 40 min, respectively ($p < 0.05$). Moderate-to-large effect sizes ($ES > 0.5$) were observed between CON vs. INT (–25 to 10 min), CON vs. EXT (–30 to 20 min), CON vs. MIX (–30 to 15 min), INT vs. EXT (throughout the entire protocol), INT vs. MIX (–30 to 15 min), and EXT vs. MIX (from –30 to –15 min and from 10 to 45 min).

The model for thermal sensation showed significant changes through time for all conditions ($p < 0.05$). As soon as exercise started thermal sensation increased quickly for all conditions but the lower the thermal sensation score at

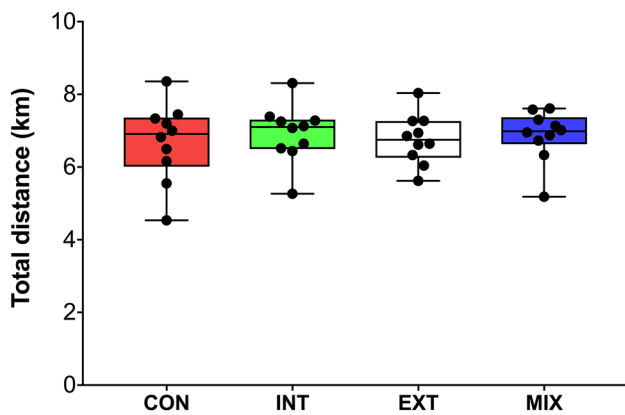


Fig. 2 Box plot illustrating the total distance covered in the four conditions (*CON* control, *INT* internal cooling, *EXT* external cooling, *MIX* internal, and external cooling). Boxes indicate the 25th and 75th percentiles. Whiskers indicate minimum and maximum values with the middle line representing the median. Individual data points are indicated by coloured dots

the end of pre-cooling, the greater the increase in thermal sensation upon the initiation of exercise (Δ thermal sensation from 0 to 5 min): *CON*: 2 ± 1.7 , *INT*: 4 ± 1.6 , *EXT*: 5.9 ± 2.3 , *MIX*: 6.8 ± 2.3). From 0 to 5 min, large effect sizes were noted for all conditions ($ES > 0.81$) and these ES were larger for the conditions which have the lowest TS at 0 min (ES : *CON* = 0.81, *INT* = 1.26, *EX* = 1.86, *MIX* = 1.97). Significant differences and moderate effect sizes ($ES > 0.5$) in thermal sensation were evident during pre-cooling (-30 to 0 min) for both *CON* and *EXT*, and *CON* and *MIX*. Significant differences in TS were also evident during pre-cooling for both *INT* and *EXT* (-30 to -5 min), and *INT* and *MIX*

(-30 to 5 min). Whereas TS for *CON* and *INT*, and *EXT* and *MIX* were similar throughout the pre-cooling period ($p > 0.05$, $ES < 0.2$). During exercise, after 5 min, all conditions were similar and followed a similar pattern of increase.

HR, blood lactate, and RPE data are illustrated in Table 1. HR and RPE were similar between all conditions and there were no effects of condition but an effect of time as all data during exercise were higher than baseline. Trivial-to-small effects were noted for HR and RPE between conditions throughout the entire protocol ($ES < 0.4$). There were moderate-to-large effects between exercise data and pre-exercise measures for all conditions ($ES > 5.0$). Blood lactate was significantly lower pre-and there was weak evidence of lower lactate levels for the *EXT* treatment in the Mid1 and 2. Post blood lactate levels for *CON* were significantly higher than *INT* and marginally higher than the *EXT* and *MIX*. Trivial-to-small effects were noted between conditions at pre, mid 1, mid 2 and post ($ES < 0.28$) and large effects were observed between exercise data and baseline for all conditions ($ES > 1.9$).

Gross sweat loss (GSL) were similar between conditions: *CON* 719.9 ± 211.9 g/min, *INT* 738.6 ± 181.9 g/min, *EXT* 696.0 ± 162.9 g/min, *MIX* 691.1 ± 182.5 g/min ($p < 0.05$, $ES < 0.20$).

Discussion

This study aimed to determine if lowering both T_{gi} and T_{sk} using a combined pre-cooling protocol (ice slurry ingestion whilst wearing a cooling garment) improved self-paced intermittent exercise in the heat. We hypothesised that a

Fig. 3 Box plots comparing the accumulated distances during the **a** first period, **b** second period, **c** third period, **d** total distance in the first, second and third periods for each activity profile (walk, jog, and run sprint) covered in the four conditions (*CON* control, *INT* internal cooling, *EXT* external cooling, *MIX* internal, and external cooling). Boxes indicate the 25th and 75th percentiles. Whiskers indicate minimum and maximum values with the middle line representing the median. Individual data points are indicated by black dots. The distance covered during SPRINT were greater during the first and second period compared to the third ($p < 0.05$). There was no interaction effect ($p < 0.05$)

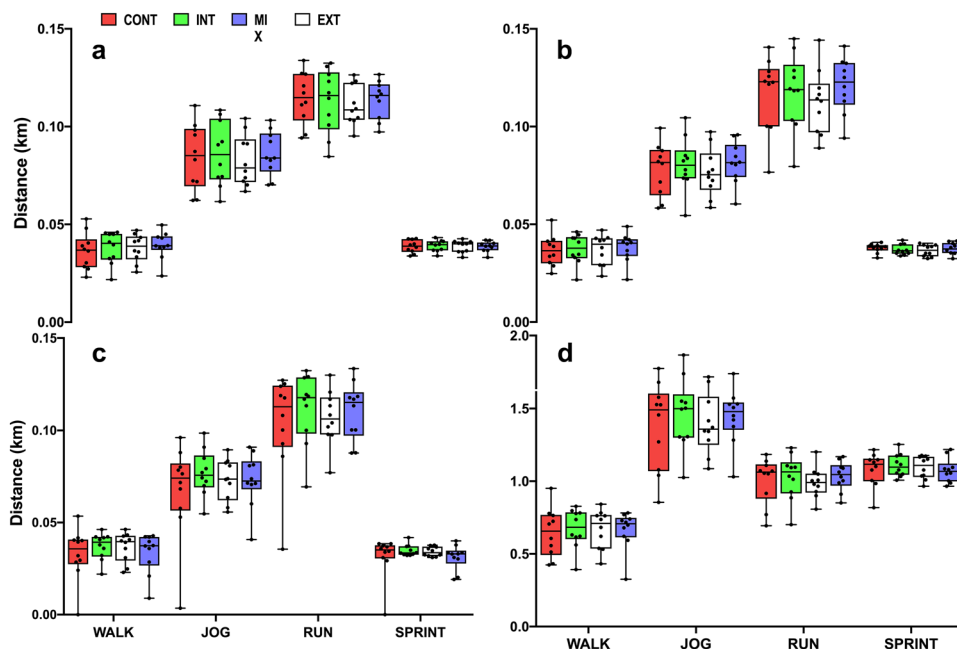
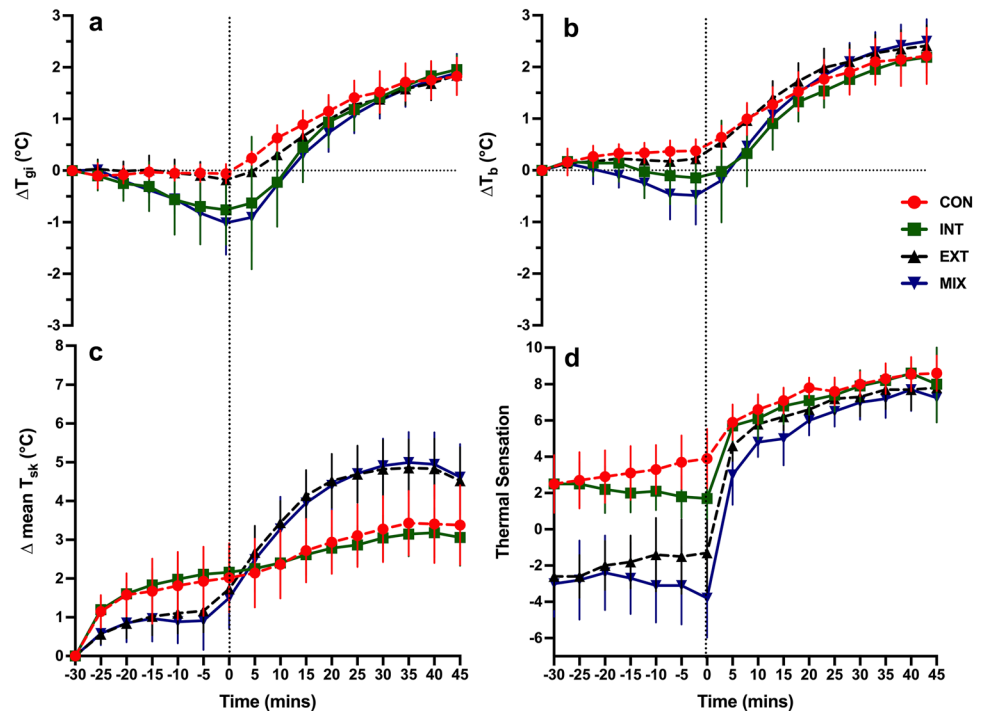


Fig. 4 Δ mean T_{gi} , T_b , and mean T_{sk} (a–c) and mean TS (d) during the *CON* (control), *INT* (internal cooling), *EXT* (external cooling) and *MIX* (mixture of internal and external cooling). Vertical lines indicate 95% confidence intervals



mixed pre-cooling protocol would lower both T_{gi} and T_{sk} more than internal or external cooling alone. The benefit of which would increase the heat storage capacity and enhance self-paced intermittent exercise performance. *MIX* was effective in reducing T_{gi} and T_{sk} , and thus T_b (prior to exercise) in comparison to all other conditions. In addition, thermal sensation was significantly lower during *MIX* compared to the *CON* and *INT* conditions, but was similar to *EXT*. Despite these aforementioned thermophysiological responses prior to exercise, there were no performance benefits during low-, moderate- or high-intensity efforts at any time point during the 46-minute protocol ($p < 0.05$).

Core and skin temperature

As expected T_{gi} did not change during pre-cooling for *CON* or *EXT* but by the end of pre-cooling T_{gi} had dropped by -0.79 ± 0.9 °C and -0.96 ± 0.8 °C for *INT* and *MIX*, respectively. The additive effect of combining ice-slurry ingestion with an external cooling garment resulted in a 0.17 °C reduction in T_{gi} in comparison to internal cooling alone. This suggests that the addition of an external cooling garment alongside internal cooling can provide a small but meaningful change in T_{gi} . However, after 15-min of self-paced intermittent exercise T_{gi} was similar between conditions. Unlike endurance performance studies where core temperature is usually higher at the end of exercise in the pre-cooled compared to controlled condition (Siegel et al. 2010, 2012), T_{gi} at the end of the intermittent exercise protocol in our study was similar between all conditions. This

seems to be a common trait amongst studies that successfully lowered core temperature prior to intermittent exercise (Aldous et al. 2018; Duffield and Marino 2007; Gerrett et al. 2017).

Whilst we were able to successfully lower mean T_{sk} using the external cooling techniques (*MIX* and *EXT*), this only lasted somewhere between 10 and 20-min during exercise. Mean T_{sk} was similar after only 10-min of exercise during *MIX* compared to *CON* but had the longest effect (20 min) for *EXT* compared to *INT*. From our results and previous literature, it seems that with the start of intermittent-based exercise the benefits of external cooling on mean T_{sk} are short lived with convergence to a similar mean T_{sk} occurring within the first 10 min (Duffield and Marino 2007; Price et al. 2009; Skein et al. 2012). A common trend that appears across external cooling studies is that the rate of rise in T_{sk} is typically greater for an external cooling technique compared to a control or internal cooling technique (Castle et al. 2006; Duffield and Marino 2007; Minett et al. 2011; Stevens et al. 2017). This greater rate of change in T_{sk} will increase the firing rate of warm thermoreceptors; resulting in stronger thermal perceptual responses (de Dear et al. 1993; Zhang et al. 2004). This is further supported from our thermal sensation responses where we typically observed that the lower the thermal sensation score at the end of pre-cooling, the greater the increase (and larger ES) in thermal sensation upon the initiation of exercise. This increase in perception of warmth may bestow no performance benefit via behavioural thermoregulation (Schlader et al. 2011). Internal cooling has been reported to delay the onset time of thermo-effector

Table 1 Mean (\pm SD) heart rate, blood lactate and RPE measured at baseline (BL) and at 5-min intervals during exercise

Time (min)	0	5	10	15	20	25	30	35	40	45
Heart rate (bpm)										
CON	63 \pm 15	158 \pm 16	162 \pm 18	157 \pm 22	170 \pm 14	168 \pm 15	170 \pm 14	170 \pm 18	172 \pm 19	173 \pm 17
INT	66 \pm 11	157 \pm 21	164 \pm 14	144 \pm 19	158 \pm 19	166 \pm 18	167 \pm 14	169 \pm 16	171 \pm 15	170 \pm 14
EXT	61 \pm 12	153 \pm 20	160 \pm 20	154 \pm 24	164 \pm 23	168 \pm 18	164 \pm 18	167 \pm 21	171 \pm 16	171 \pm 14
MIX	61 \pm 10	160 \pm 12	162 \pm 13	161 \pm 18	172 \pm 13	170 \pm 15	172 \pm 12	171 \pm 11	176 \pm 13	170 \pm 25
RPE										
CON	-	13 \pm 2	15 \pm 2	15 \pm 2	16 \pm 2	17 \pm 1	17 \pm 1	17 \pm 2	18 \pm 2	18 \pm 2
INT	-	14 \pm 1	15 \pm 1	15 \pm 2	16 \pm 1	16 \pm 1	17 \pm 2	17 \pm 2	18 \pm 2	18 \pm 2
EXT	-	13 \pm 1	14 \pm 1	15 \pm 1	16 \pm 2	16 \pm 2	16 \pm 2	17 \pm 2	18 \pm 2	18 \pm 2
MIX	-	13 \pm 1	14 \pm 1	15 \pm 1	16 \pm 1	16 \pm 2	16 \pm 1	17 \pm 2	17 \pm 2	17 \pm 2
Blood lactate (mmol/L)										
CON	1.5 \pm 0.6	-	-	6.4 \pm 3.1	-	-	6.5 \pm 2.9	-	-	6.2 \pm 2.4
INT	1.4 \pm 0.4	-	-	6.6 \pm 3.1	-	-	6.6 \pm 3.1	-	-	5.9 \pm 1.8
EXT	1.5 \pm 0.4	-	-	5.6 \pm 3.1	-	-	6.1 \pm 3.3	-	-	6.1 \pm 2.6
MIX	1.4 \pm 0.4	-	-	6.8 \pm 3.1	-	-	6.1 \pm 2.6	-	-	6.0 \pm 2.0
				Mid1			Mid2			Post

Data collected in all 4 conditions are presented (CON: control, INT: internal cooling, EXT: external cooling and MIX: internal and external cooling). Blood lactate was measured at BL and at 3 interspersed time points during the exercise protocol (Mid 1, Mid 2, and Post exercise). Heart rate, blood lactate and RPE all increased above baseline during exercise ($p < 0.05$) but there were no differences between conditions nor an interaction effect ($p > 0.05$)

responses (i.e. sweating/vasodilation starts later into exercise) leading to a more rapid accumulation of metabolic heat during the early phase of exercise despite a lower absolute core temperature (Jay and Morris 2018). Whilst no sudomotor or vasomotor responses were measured in the present study and we also observed no differences in GSL between conditions, we did observe a greater rise in T_{gi} for the two conditions that employed an internal cooling protocol (INT and MIX) compared to external only and control conditions. The external cooling techniques also resulted in a greater rate of change in T_{sk} for EXT and MIX conditions. Maintaining a lower T_{sk} is important to provide a more efficient heat transfer gradient from the core.

Aldous et al. (2018) maintained the effects of mixed-method pre-cooling (7.5 g/kg of ice slurry at $-1\text{ }^{\circ}\text{C}$ and ice vest and towel to torso and arms and ice packs around the upper legs) on core temperature, T_{sk} and thermal sensation throughout the first half (45-min) of an intermittent protocol compared to a control condition. Whilst in our study, these thermophysiological responses were similar to the control within 10–15 min of exercise. We conducted our pre-cooling within the temperature-controlled room ($34.4 \pm 1.4\text{ }^{\circ}\text{C}$, $36.3 \pm 4.6\%$ RH), whereas Aldous et al. (2018) conducted all cooling manoeuvres in a temperate condition ($18 \pm 0.9\text{ }^{\circ}\text{C}$, $50.3 \pm 4.7\%$ RH) before moving into hot conditions for exercise ($30.7 \pm 0.3\text{ }^{\circ}\text{C}$, $50.9 \pm 4.2\%$ RH), which may have offered a prolonged cooling advantage. This suggests pre-cooling in an already cool room may be more effective than cooling in the same hot environment. The influence of the environmental conditions where pre-cooling techniques are administered requires clarification.

Performance

We previously reported no performance benefit of internal cooling on a similar (but shorter) self-paced intermittent protocol compared to a controlled beverage (Gerrett et al. 2017). We speculated that the minimal effect of internal cooling on mean T_{sk} may have accounted for no performance improvement due to the reported role of T_{sk} on behavioural regulation (Faulkner et al. 2015; Sawka et al. 2011; Schlader et al. 2011). As a result, in the present study we investigated whether the addition of external cooling with internal cooling would benefit self-paced intermittent performance, especially if the combined techniques lowered both core and T_{sk} . Whilst we observed an increased heat storage capacity and lower thermal perception by combining internal and external cooling it offered no benefit, as performance variables were similar between conditions. More surprisingly, the performance variables were all similar between conditions during the first 15 min of the protocol where significant and/or large

effect sizes were observed in T_{gi} between both the INT and MIX and EXT and CON conditions.

This is not the first study to show no improvements in intermittent exercise performance following reductions in only core temperature (Gerrett et al. 2017; Zimmermann and Landers 2015) and a meta-analysis reported a small effect size of lowering core temperature prior to intermittent exercise (Hohenauer et al. 2018). The evidence of lowering both core temperature and T_{sk} has been more equivocal with some evidence reporting a performance benefit for low intensity but not moderate-maximal efforts (Duffield and Marino 2007; Minett et al. 2011) and others vice-versa (Aldous et al. 2018). Aldous et al. (2018) found moderate improvements in high speed (very likely, 0.68) and a variable run (very likely, 0.81) distances covered during the first half (45 min) of a simulated soccer match. They attributed this to reductions in core temperature, T_{sk} and thermal sensation, which were maintained throughout the 45-min intermittent protocol. Maintaining lower thermophysiological responses during exercise may be important for attenuating the loss of performance in hot conditions. This may explain the discrepancy between the two studies.

We observed lower percentage of peak speeds in the final (third) 15.5-min period compared to the first 15.5-min period for submaximal running (WALK, JOG and RUN) during CON only. This suggests that there may be very subtle effects upon performance that were apparent in moderate and high intensity exercise, but not sprinting. INT and MIX cooling strategies further enhanced the attenuation in peak speed between the first and third period whilst jogging. Maximal intensity exercise (SPRINT) had a significantly lower percentage of peak speed and large ES (>0.67) during the third period in comparison to the first period for all conditions. This is reflective of a down regulation of exercise intensity perhaps due to incremental fatigue during intermittent exercise.

Brade et al. (2013) also found no significant improvement in intermittent exercise performance following a combined internal and external precooling protocol. The effects of mixed-methods pre-cooling on intermittent-sprint performance may only become apparent when the thermal stress is sufficient to induce heat strain (Duffield and Marino 2007). The RH ($36.3 \pm 4.6\%$ RH) in the current study and Brade et al. (2013) ($37\text{--}38\%$ RH) may not have been of sufficient magnitude for pre-cooling to have any positive effect. Chmura et al. (2017) observed the activity profiles of 2014 FIFA World Cup players and found that when RH was above 60% the number of sprints were significantly reduced, regardless of air temperature (below $22\text{ }^{\circ}\text{C}$ or above $28\text{ }^{\circ}\text{C}$). It is speculated that when the environmental conditions suppress heat dissipation (i.e. $>60\%$ RH) the benefits of pre-cooling may be more apparent. The environmental conditions could strongly influence core temperature and recently it has been suggested that

intermittent sprint performance is impaired when core temperature exceeds 39 °C and as such one should aim to attenuate the core temperature rise (Girard et al. 2015). Our data and previous studies indicate that the environmental conditions of the activity and the conditions in which pre-cooling is employed, can impact upon whether pre-cooling results in detectable benefits in intermittent sprint performance (Aldous et al. 2018; Brade et al. 2013; Duffield and Marino 2007; Gerrett et al. 2017). As such, further research may be necessary to confirm the specific conditions in which pre-cooling may or may not be effective.

Sensory feedback

The role of T_{sk} on behavioural regulation has been documented in endurance-based exercise activities (Schlader et al. 2011) but not intermittent exercise. However, we speculated that by lowering both T_{gi} and T_{sk} a colder thermal sensation would be experienced which would benefit behavioural thermoregulation and allow for improved performance compared to a control condition. However, the benefits of lowering thermal sensation with our external cooling techniques were short-lived, converging within 10 min and having the greatest rate of change for MIX compared to CON and INT. Although MIX lowered both T_{gi} and mean T_{sk} , the thermal sensations were similar to EXT which lowered mean T_{sk} only. External cooling is therefore required to alter thermal sensation but combining it with an internal cooling technique did not seem to enhance thermal sensation in our study. Favourable thermal perceptions may need to be strong enough to attenuate performance decrements in the heat, as such, maintaining a lowered core temperature, mean T_{sk} and thermal sensation may be required for intermittent exercise performance in the heat. This warrants investigation.

Limitations

Whilst an extended warm-up is typical practice for most athletes, to determine the respective effects of the pre-exercise cooling interventions the warm-up in the current study was restricted to 2 min. This was to minimize the time between the pre-cooling and commencement of the protocol and maximize the physiological and perceptual effects of the cooling and elucidate any controlling mechanisms. However, it should be highlighted that this is not an externally valid approach for team sport athletes but others have investigated cooling strategies integrated into sport-specific warm ups (Taylor et al. 2019). It should be noted, despite speed and distance covered being similar across conditions altered thermal perception may affect decision-making and skill execution, which is considered a key component of success during intermittent team sports such as football. The

influence of precooling on decision-making and skill execution warrants further investigation.

Conclusions

This study demonstrated a practical mixed-method pre-cooling technique does not improve self-paced intermittent exercise in hot dry conditions. Despite lowering T_{gi} , mean T_{sk} and thermal sensation prior to exercise, the distance covered during submaximal and maximal exercise bouts were similar to conditions that offered no cooling or lowered T_{gi} , or mean T_{sk} only. The benefits of pre-cooling on thermophysiological responses waned after 10–20 min. Our data and evidence from previous studies indicate that pre-cooling techniques should be employed that can attenuate the increase in thermophysiological and thermal-perceptual responses during exercise to enhance performance. Further research is required to investigate if pre-cooling strategies can enhance self-paced intermittent exercise in hot and humid conditions.

Author contribution statement GT and NG conceived and designed the research. GT, MD, CH and BD carried out the experiment. NG analysed the data. GT, TC, BD and NG wrote the manuscript. NG supervised the project. All authors read and approved the manuscript.

Acknowledgements The authors would like to acknowledge Dr Mark Warren for the support provided with analysing the data.

Funding This study was funded by the University of Worcester.

Compliance with ethical standards

Conflict of interest The authors declare that they have no conflict of interest.

Ethical approval All procedures performed in studies involving human participants were in accordance with the ethical standards of the institutional and/or national research committee and with the 1964 Helsinki Declaration and its later amendments or comparable ethical standards.

Informed consent Informed consent was obtained from all individual participants included in the study.

Open Access This article is distributed under the terms of the Creative Commons Attribution 4.0 International License (<http://creativecommons.org/licenses/by/4.0/>), which permits unrestricted use, distribution, and reproduction in any medium, provided you give appropriate credit to the original author(s) and the source, provide a link to the Creative Commons license, and indicate if changes were made.

References

- Aldous JWF, Christmas BCR, Akubat I, Stringer CA, Abt G, Taylor L (2018) Mixed-methods pre-match cooling improves simulated soccer performance in the heat. *Eur J Sport Sci* 19:1–10. <https://doi.org/10.1080/17461391.2018.1498542>
- Ashrae (2005) 2005 ASHRAE handbook—fundamentals. Physiology. <https://doi.org/10.1039/c1cs15219j>
- Bongers CCWG, Thijssen DHJ, Veltmeijer MTW, Hopman MTE, Eijssvogels TMH (2015) Precooling and percooling (cooling during exercise) both improve performance in the heat: A meta-analytical review. *Br. J. Sports Med.* 49:377–384. <https://doi.org/10.1136/bjsports-2013-092928>
- Borg GA (1982) Borg's RPE Scale.pdf. *Med Sci Sport Exerc*
- Brade CJ, Dawson BT, Wallman KE (2013) Effect of pre-cooling on repeat-sprint performance in seasonally acclimatised males during an outdoor simulated team-sport protocol in warm conditions. *J. Sport. Sci. Med.* 12:565–570. <https://doi.org/10.1007/s00421-012-2316-x>
- Castle PC, Macdonald AL, Philp A, Webborn A, Watt PW, Maxwell NS, Paul C (2006) A Physiological Systems Approach to Human and Precooling leg muscle improves intermittent sprint exercise performance in hot, humid conditions. *J. Appl. Physiol.* 100:1377–1384. <https://doi.org/10.1152/jappphysiol.00822.2005>
- Castle P, Mackenzie RW, Maxwell N, Webborn ADJ, Watt PW (2011) Heat acclimation improves intermittent sprinting in the heat but additional pre-cooling offers no further ergogenic effect. *J. Sports Sci.* 29:1125–1134. <https://doi.org/10.1080/02640414.2011.583673>
- Chmura P, Konefał M, Andrzejewski M, Kosowski J, Rokita A, Chmura J (2017) Physical activity profile of 2014 FIFA World Cup players, with regard to different ranges of air temperature and relative humidity. *Int. J. Biometeorol.* 61:677–684. <https://doi.org/10.1007/s00484-016-1245-5>
- de Dear RJ, Ring JW, Fanger PO (1993) Thermal Sensations Resulting From Sudden Ambient Temperature Changes. *Indoor Air.* <https://doi.org/10.1111/j.1600-0668.1993.t01-1-00004.x>
- Drust B, Rasmussen P, Mohr M, Nielsen B, Nybo L (2005) Elevations in Core and Muscle Temp Impairs Repeated Sprint Performance. *Acta Physiol. Scand.* 183:181–190
- Duffield R, Marino FE (2007) Effects of pre-cooling procedures on intermittent-sprint exercise performance in warm conditions. *Eur. J. Appl. Physiol.* 100:727–735. <https://doi.org/10.1007/s00421-007-0468-x>
- Faulkner SH, Hupperets M, Hodder SG, Havenith G (2015) Conductive and evaporative precooling lowers mean skin temperature and improves time trial performance in the heat. *Scand. J. Med. Sci. Sport* 25:183–189. <https://doi.org/10.1111/sms.12373>
- Gerrett N, Jackson S, Yates J, Thomas G (2017) Ice slurry ingestion does not enhance self-paced intermittent exercise in the heat. *Scand. J. Med. Sci. Sport.* 27:1202–1212. <https://doi.org/10.1111/sms.12744>
- Girard O, Brocherie F, Bishop DJ (2015) Sprint performance under heat stress: a review. *J Med Sci Sport Scand.* <https://doi.org/10.1111/sms.12437>
- Haile L, Gallagher, M, J. Robertson R, (2014) Perceived Exertion Laboratory Manual, Perceived Exertion Laboratory Manual. <https://doi.org/10.1007/978-1-4939-1917-8>
- Hohenauer E, Stoop R, Clarys P, Clijnsen R, Deliens T, Taeymans J (2018) The effect of pre-exercise cooling on performance characteristics: a systematic review and meta-analysis. *Int J Clin Med* 09:117–141. <https://doi.org/10.4236/ijcm.2018.93012>
- Hunt AP, Bach AJE, Borg DN, Costello JT, Stewart IB (2017) The systematic bias of ingestible core temperature sensors requires a correction by linear regression. *Front. Physiol.* 8:1–7. <https://doi.org/10.3389/fphys.2017.00260>
- Jay O, Morris NB (2018) Does Cold Water or Ice Slurry Ingestion During Exercise Elicit a Net Body Cooling Effect in the Heat? *Sport. Med.* 48:17–29. <https://doi.org/10.1007/s40279-017-0842-8>
- Minett GM, Duffield R, Marino FE, Portus M (2011) Volume-dependent response of precooling for intermittent-sprint exercise in the heat. *Med. Sci. Sports Exerc.* 43:1760–1769. <https://doi.org/10.1249/MSS.0b013e318211be3e>
- Mohr M, Nybo L, Grantham J, Racinais S (2012) Physiological responses and physical performance during football in the heat. *PLoS One.* <https://doi.org/10.1371/journal.pone.0039202>
- Nassis GP, Brito J, Dvorak J, Chalabi H, Racinais S (2015) The association of environmental heat stress with performance: analysis of the 2014 FIFA World Cup Brazil 609–613. <https://doi.org/10.1136/bjsports-2014-094449>
- O'Brien SF, Yi QL (2016) How do I interpret a confidence interval? *Transfusion* 56:1680–1683. <https://doi.org/10.1111/trf.13635>
- Pauw K De, Roelands B, Cheung SS, Geus B De (2013) Guidelines to Classify Subject Groups in Sport-Science Research. <https://doi.org/10.1123/ijssp.8.2.111>
- Price MJ, Boyd C, Goosey-Tolfrey VL (2009) The physiological effects of pre-event and mid-event cooling during intermittent running in the heat in elite female soccer players. *Appl. Physiol. Nutr. Metab.* 34:942–949. <https://doi.org/10.1139/H09-078>
- Sawka MN, Leon LR, Montain SJ, Sonna LA (2011) Integrated physiological mechanisms of exercise performance, adaptation, and maladaptation to heat stress. *Compr. Physiol.* 1:1883–1928. <https://doi.org/10.1002/cphy.c100082>
- Schlader ZJ, Simmons SE, Stannard SR, Mündel T (2011) Skin temperature as a thermal controller of exercise intensity. *Eur. J. Appl. Physiol.* 111:1631–1639. <https://doi.org/10.1007/s00421-010-1791-1>
- Siegel R, Maté J, Brearley MB, Watson G, Nosaka K, Laursen PB (2010) Ice slurry ingestion increases core temperature capacity and running time in the heat. *Sci Sports Exerc Med.* <https://doi.org/10.1249/MSS.0b013e3181bf257a>
- Siegel R, Maté J, Watson G, Nosaka K, Laursen PB (2012) Pre-cooling with ice slurry ingestion leads to similar run times to exhaustion in the heat as cold water immersion. *J. Sports Sci.* <https://doi.org/10.1080/02640414.2011.625968>
- Skein M, Duffield R, Cannon J, Marino FE (2012) Self-paced intermittent-sprint performance and pacing strategies following respective pre-cooling and heating. *Eur. J. Appl. Physiol.* 112:253–266. <https://doi.org/10.1007/s00421-011-1972-6>
- Stevens CJ, Bennett KJM, Sculley D V., Callister R, Taylor L, Dacombe BJ, (2017) A Comparison of Mixed-Method Cooling Interventions on Preloaded Running Performance in the Heat. *J. Strength Cond. Res.* <https://doi.org/10.1519/JSC.0000000000001532>
- Taylor L, Stevens CJ, Thornton HR, Poulos N, Christmas BCR (2019) Limiting the Rise in Core Temperature During a Rugby Sevens Warm-up With an Ice Vest. *J Sports Physiol Perform Int.* <https://doi.org/10.1123/ijssp.2018-0821>
- Tofari PJ, McLean BD, Kemp J, Cormack S (2014) A self-paced intermittent protocol on a non-motorised treadmill: A reliable alternative to assessing team-sport running performance. *J. Sport. Sci. Med.* 14:62–68
- Tyler CJ, Sunderland C, Cheung SS (2015) The effect of cooling prior to and during Exercise on Exercise performance and capacity in the heat: A meta-analysis. *Br. J. Sports Med.* 49:7–13. <https://doi.org/10.1136/bjsports-2012-091739>
- Wood SN (2017) Generalized additive models: An introduction with R 2 An Introduction with R, Second Edition Generalized Additive Models 10.1201/9781315370279

Zhang H, Huizenga C, Arenas E, Wang D (2004) Thermal sensation and comfort in transient non-uniform thermal environments. *J Appl Physiol Eur.* <https://doi.org/10.1007/s00421-004-1137-y>

Zimmermann MR, Landers GJ (2015) The effect of ice ingestion on female athletes performing intermittent exercise in hot conditions. *Eur. J. Sport Sci.* 15:407–413. <https://doi.org/10.1080/17461391.2014.965751>

Zuur AF, Ieno EN, Elphick CS (2009) A protocol for data exploration to avoid common statistical problems. *Evol Methods Ecol.* <https://doi.org/10.1111/j.2041-210x.2009.00001.x>

Publisher's Note Springer Nature remains neutral with regard to jurisdictional claims in published maps and institutional affiliations.