



James Fisher

'A Quiet Companion' - James Fisher

20th November - 12th December 2010

*Walked all day through live oak and manzanita
Scrabbling through dust down Tamalpais –
Thought of high mountains;
Looked out on a sea of fog.
Two of us, carrying packs.*

Gary Snyder, *Myths and Texts*

There are figures in the landscape here. The landscape is an abstracted lattice of brushwood. It is bleached and mottled by light or stained with shadow. There are nameless fruit here, and silvery leaves. The figures are solitary. At first glance the individuals appear distinct in each painting – different ages, depicted at different times – but a closer look reveals them to be, in spirit, one figure. She emerges from the landscape and is made of the same stuff as the landscape. Whilst her mouth is often concealed by briar and branch, her eyes are watchful; she is contemplative and vigilant.

I have a walking companion. Together we have hiked high above the Saguenay Fjord in Québec; we have strode the length of sands between Bamburg and Seahouses, Lynn and Wells. We have meandered, heads hunched, through rain-glossed mediaeval streets of Mantua and Spoleto. Together we have wandered around the mouths of gloops on Hoy, tracked parched waterfalls up to Kinder Scout, and followed canals and trunk roads between Ely and Denver.

On all the hundreds of walks we have completed together, barely a word passed between us, but our shared, voiceless conversations continue to astonish me. Almost silently on these walks, we have assembled an album of common images, incidents, sensations and associations. By walking noiselessly together, we have learned how to look, and shaped a mute space in our imaginations full of pictures.

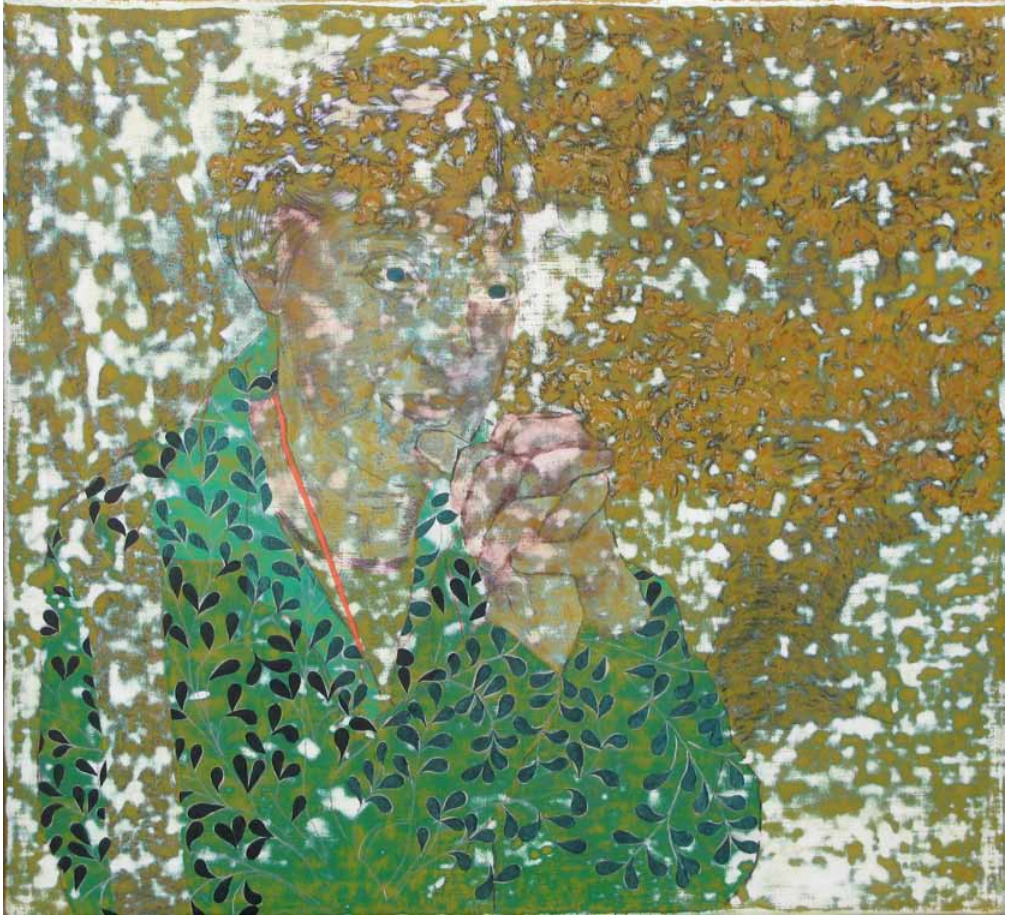
When making these recent paintings I have thought a lot about the companionship of my quiet walks, and the possibility of holding a similar near-silence in the paintings' still surface.

James Fisher, November 2010.

Cover: **Pruning in Frost** oil on linen 55 x 60 cm



Wedded to Silence *oil on linen* 55 x 60 cm



Salt-Stopped Hands *oil on linen* 55 x 60 cm



I Soothe Your Sore Eyes oil on linen 55 x 60 cm

JAMES FISHER

1972 born UK
1992 - 1995 University of Brighton
1995 - 1997 Royal College of Art, London
2006 - 2009 PhD Fine Art, University of Gloucestershire

SOLO EXHIBITIONS

2005 *The Wanderer* Rochester City Art Gallery
and other recollections Eagle Gallery, London
2008 *I came here a stranger* Eagle Gallery, London
As a stranger I depart Campden Gallery
2009 *My Hopes are not Entirely Hopeless* Pond Gallery,
Snape Maltings, Aldeburgh Festival

GROUP EXHIBITIONS

2003 *20 x 5* Eagle Gallery, London
2004 Rose Pavilion Interior (with muf architecture/art)
5 Biennale d'Art Contemporain Enghien les Bains,
France
2005 *Conscious Fiction* Eagle Gallery, London
Ex Roma APT Gallery, London
Fokelore APT Gallery, London
2006 *Cartoon Collage and The Decorative Motif* Eagle
Gallery, London
Campden Gallery, Chipping Campden
Disrupted Narratives Eagle Gallery, London
The Worcester Pilgrim Project Worcester Cathedral
2007 *From Elsewhere* Campden Gallery.
Chipping Camden
Cities and Eyes Aldeburgh Music 2007, Aldeburgh
Enchanted Eagle Gallery, London
Baroque Eagle Gallery, London
2008 *Exchange* Paul Kane Gallery, Dublin
London Original Print Fair, Royal Academy -
Eagle Gallery
Royal Academy Summer Exhibition
2009 Northern Print Biennale, Newcastle
2010 London Original Print Fair, Royal Academy -
Eagle Gallery
Royal Academy Summer Exhibition - invited artist
Memory's Images Eagle Gallery, London

AWARDS

1995 Travel Award, East Sussex County Council
1996 Artist in Residence, The University of Calgary,
Canada
2001 Abbey Scholarship in Painting, The British School
in Rome
2002 - 2006 Acme Live/Work Programme, Sugar House
Studios, London

COLLECTIONS

Jerwood Foundation, London

PUBLICATIONS

Encountering St Ippolyts 2005 publ. EMH Arts/Eagle Gallery
London
The Invisible City - published EMH Arts, London 2007 ISBN
978-0-9554046-3-4
I came here a stranger, as a stranger I depart - published EMH
Arts / Campden Gallery 2007 ISBN 978-0-9554046-7-2

BIBLIOGRAPHY

The Independent, 4 November 2003 - Sue Hubbard:
20 X 5 Drawings
Galleries Magazine, January 2005 - Corinna Lotz:
Conscious Fiction
The Independent, 17 January 2005 - Sue Hubbard:
Conscious Fiction
and other recollections - exhibition publication -
Eagle Gallery 2005
The Pilgrimage Books - published artworks 2006
Printmaking Today, Winter 2006 - Emma Hill:
In Pilgrims' Footsteps
From Elsewhere - exhibition publication - Campden Gallery,
Chipping Campden 2007
The Irish Times, 9 April 2008- Aidan Dunne
Aldeburgh Music 2009 - Festival programme
Galleries Magazine, June 2009 - Blake Hall *Aldeburgh Festival*
Royal Academy Illustrated 2010 - Richard Cork
ISBN978-1-905111-87-1



First Loss *oil on paper* 50 x 65 cm



To the Moon *oil on paper* 50 x 65 cm



campden
gallery

Campden Gallery, High Street, Chipping Campden, Gloucestershire GL55 6AG
Tel: 01386 841555 info@campdengallery.co.uk www.campdengallery.co.uk
Open Tuesday to Saturday 10.00am – 5.30pm Sunday 11.00am – 4.00pm